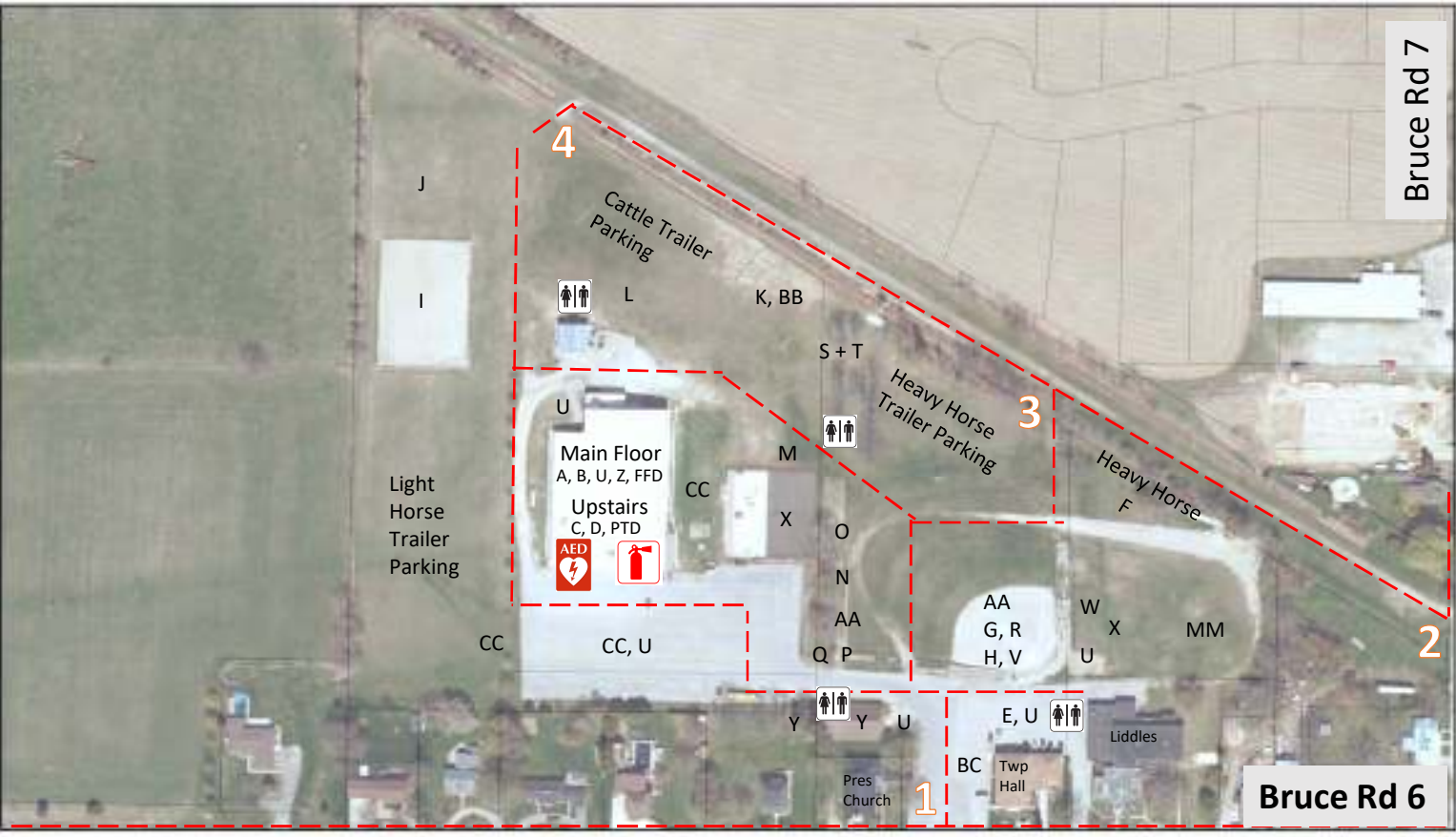


Ripley-Huron Fall Fair

September 29 & 30, 2017

17 Queen Street, Ripley | Friday 5 p.m.-10 p.m., Saturday 9 a.m.-4:30 p.m.

- A – Exhibits, School, 4-H
- B – Commercial Vendors
- C – Little Prince/Princess
- C – Ambassador
- D – Cake + Pie Auction
- E – Pedal Tractor
- F – Garden Tractor Pull
- G – Canada Under the Lights
- H – Frog Jumping – Bale Rolling
- I – Light Horse Ring
- J – Light Horse
- K – Dairy Beef Show Rings
- L – Dairy Beef Tie Up
- M – Poultry
- N – Sheep Pens
- O – Petting Zoo + Pony Rides
- P – Office
- Q – First Aid
- R – Heavy Horse Ring
- S – Car Show
- T – Truck, Tractor Show
- U – Food Vendors
- V – Main Stage Entertainment
- W – Photo Booth
- X – Clowns, Clarol, Snippity
- Y – Soper Creek Wildlife
- Z – Wildlife Mount
- AA – Chainsaw, Nail Driving
- BB – Tbone Show + Sale
- BC – Bruce County 150 Trailer
- CC – Midway
- MM – Mega Machines + Black Rock Climbers
- PTD – Pre-Teen Dance (28SEP2017 7 p.m. – 9 p.m.)
- FFD – Fall Fair Dance on Arena Floor (30SEP2017 9 p.m. – 1 a.m.)



0 40 80 160 Meters

--- Emergency Route

Bruce Rd 7

Bruce Rd 6